

Welch®

**OEM, Industrial & Refrigeration Catalog
2005-2006**

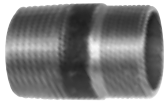
**Vacuum System Connectors & Accessories
Catalog Pages 22–24**

ORDER ONLINE AT: www.cfpwarehouse.com or contact:

COMBINED FLUID PRODUCTS COMPANY
805 Oakwood Road, Lake Zurich, Illinois 60047
sales@combinedfluidproducts.com
www.combinedfluidproducts.com
Tel (847) 540-0054 Fax (847) 540-0513
(800) 521-2083

Vacuum System Connectors & Tubing

Male NPT Pipe Inlet And Exhaust Adapters



- Black Pipe
- Adapt inlet and exhaust to NPT Thread

PUMP MODEL	MACHINE THREAD	NPT MALE THREAD	CAT. NO.
1400, 1399	3/4-20	1/2"	1393N
1380, 1402, 1376, 1405	1-20	3/4"	1393P

Red Vacuum Hose • Hose Clamps

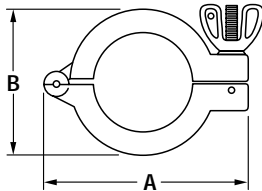


- Very thick walled hose for vacuum or pressure applications
- Quick-acting clamp tightened by a thumbscrew actuated worm screw
- Hose comes in 5 ft. lengths(1.5m)

SPECIFICATIONS			HOSE KIT CAT. NO.					CLAMPS CAT. NO.
I.D.	WALL THICKNESS	O.D.	5ft only	10ft only	15ft only	20ft only	25ft only	10/pkg.
3/16	5/16	13/16	331020-5	331020-10	-	-	-	305320
1/4"	1/4	3/4	331030-5	-	-	-	-	305320
7/16	5/16	1-1/16	331040-5	331040-10	-	-	-	305340
5/8	3/8	1-3/8	331050-5	331050-10	-	-	331050-25	305350
13/16	3/8	1-9/16	331060-5	331060-10	331060-15	305360-20	-	305360
1 5/8	11/16	3	331080-5	331080-10	-	-	-	305380

*Hose works with pumps that accept 3/8 in. I.D. hose.

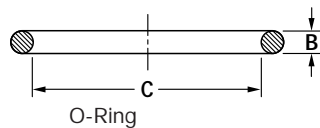
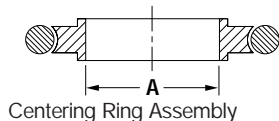
Hinged Clamps



- Aluminum
- Closure by wing and nut bolt

ISO	A	B	CLAMP WIDTH	CAT. NO.
NW 16	2.612	1.625	0.612	302201
NW 25	2.965	1.950	0.612	302202
NW 40	3.735	2.600	0.625	302203

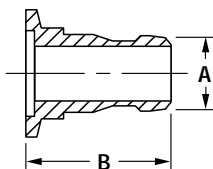
Centering Assemblies • Replacement O-Rings



- Stainless steel centering ring with o-ring
- Replaceable Viton® o-ring seal

ISO	CENTERING RING ASSEMBLY		REPLACEMENT O-RING		
	A	CAT. NO.	B	C	CAT. NO.
NW 16	0.630	303101	0.210	0.725	304801
NW 25	0.984	303102	0.210	1.100	304802
NW 40	1.575	303103	0.210	1.600	304803

Rubber Hose Adapters



- ISO NW to rubber vacuum hose
- Aluminum

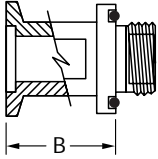
ISO	HOSE I.D.	A	B	CAT. NO.
NW 16	7/16	0.625	1.65	501241
NW 16	5/8	0.750	1.65	501251
NW 25	13/16	0.875	1.73	501262
NW 40	1-5/8	1.63	2.17	501283

Dimensions are in inches

Vacuum System Connectors & Tubing

ISO NW Inlet Connectors For High Vacuum Pumps

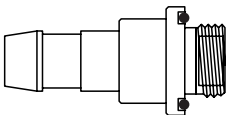
- Stainless steel with o-ring
- No sealant required for installation
- For pumps above listed serial number



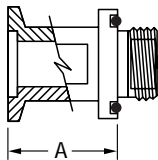
ISO	THREAD SIZE	PUMP MODEL	SERIAL NO.	B	CAT. NO.
NW 16	3/4-20	1399	>26461	1.12	1393F
NW 16	3/4-20	1400, 1400N	>18069	1.12	1393F
NW 25	1-20	1405	>77703	1.2	1393G
NW 25	1-20	1380	>2114	1.2	1393G
NW 25	1-20	1402, 1402N	>133218	1.2	1393G
NW 25	1-20	1376, 1376N	>14594	1.2	1393G
NW 40	1-20	1374	>73519	1.4	1393H
NW 40	1.75-20	1397	>51217	1.4	1393H
NW 16	3/4-20	8905	All	1.12	8905K-05
NW 25	1 1/8-20	8907, 8912, 8917, 8920, 8925	All	1.4	8907K-05

Exhaust Connectors For High Vacuum Pumps

- For adding an exhaust line to a pump
- Connectors for vacuum hose and ISO NW



Hose Connector



ISO Connector

PUMP MODELS	HOSE CONNECTOR		ISO CONNECTOR			
	HOSE I.D.	CAT. NO.	THREAD SIZE	ISO NW	A	CAT. NO.
1399, 1400, 8905, 8890	7/16	1393J	3/4-20	NW 16	1.12	1393F
1402, 1380, 1376, 8920, 8925, 8907, 8912, 8917, 1405	13/16	1393K	1-20	NW 25	1.2	1393G
1374, 1397	1-5/8	1393L	1 3/4-20	NW 40	1.4	1393H
1405, 1402	7/16	1393M	1-20	NW 25	1.2	1393G

UNI BARB™ Inlet Connectors For High Vacuum Pumps

- Accepts two sets of tubing ID
- Aluminum
- With inlet screen



THREAD SIZE	PUMP MODEL	Hose I.D.	CAT. NO.
3/4-20	1400, 1399, 8905	3/16" & 7/16"	8905K-06
1 1/8-20	8907, 8912, 8917	7/16" & 13/16"	8907K-06
1 1/8-20	8920, 8925, 8917	9/16" & 13/16"	8920K-06

Brass Hose Barb

- Brass
- For use with ISO to female pipe adaptors



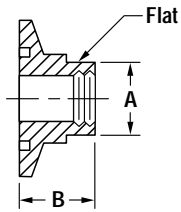
1393X

HOSE BARB	THREAD	HOSE I.D.	CAT. NO.
1/4	1/4 NPT	3/16 and 3/8	1393X

Dimensions are in inches

Vacuum System Connectors & Tubing

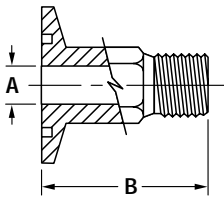
Female Pipe Adapters



- Female stubs have 1/8 in. to 3/4 in. NPT
- Stainless steel
- Can be used with many gauge probes including Welch No. 1515A and 1516A (see page 31)
- Can be used with brass hose barbs (see page 25)

ISO	NPT	A	B	CAT. NO.
NW 16	1/8	0.62	0.50	506111
NW 16	1/4	0.62	0.50	506121
NW 25	1/8	0.88	0.50	506112
NW 25	1/4	0.88	0.50	506122
NW 25	1/2	0.88	0.50	506142

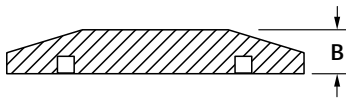
Male Pipe Adapters



- Male stubs have 1/8 in. to 3/4 in. NPT
- Hex shank
- Stainless steel

ISO	NPT	A	B	CAT. NO.
NW 16	1/4	0.281	1.6	505121
NW 25	1/8	0.188	1.6	505112
NW 25	1/4	0.281	1.6	505122
NW 25	1/2	0.496	1.6	505142
NW 25	3/4			505162

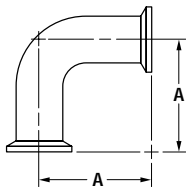
Blank-Off Flanges



- Stainless steel
- To close off unused parts

ISO	B	CAT. NO.
NW 16	0.20	388101
NW 25	0.20	388102

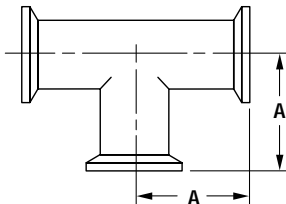
90° Elbows



- Stainless steel
- Same size flange on both ports

ISO	A	CAT. NO.
NW 16	1.50	383101
NW 25	2.04	383102

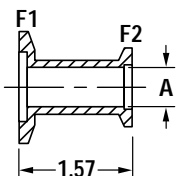
Tees



- Stainless steel
- Same size flanges on all ports

ISO	A	CAT. NO.
NW 16	1.50	384101
NW 25	2.04	384102

Reducers



- Makes differing sizes of ISO flanges
- Stainless steel

ISO F1	ISO F2	A	CAT. NO.
NW 25	NW 16	0.555	387121
NW 40	NW 16	0.555	387131
NW 40	NW 25	0.900	387132